



29 S College Ave
Newton, NC 28658
(828) 994-4444

www.campbelldesign.com

Why Choose Campbell Design?

Campbell Design's approach demonstrates our dedication to the client's satisfaction and offering a total solution from drawing board to completed structure.

Excellence in Design & Delivery: We are driven to succeed through creating design / build solutions that will ultimately help our clients succeed. This means exceeding expectations in delivering as promised, paying attention to the details that result in the "wow" factor, and allowing the time for true quality workmanship in the execution of our design solutions to be achieved.

Flexibility Today & Tomorrow: Design to meet your needs today while anticipating your needs in the future is considered the only way to effectively design any project of any scope. By designing with a certain amount of flexibility in mind, when your company grows, we want your building or space to be able to grow with you.

Resourceful Creativity: Creativity on a budget is nothing new to us. True creativity also puts resourcefulness and ingenuity to work on the drawing board. It's not just about using resources wisely and practically, but also about knowing the resources that are out there to offer the best possible solutions for the money you have to spend.

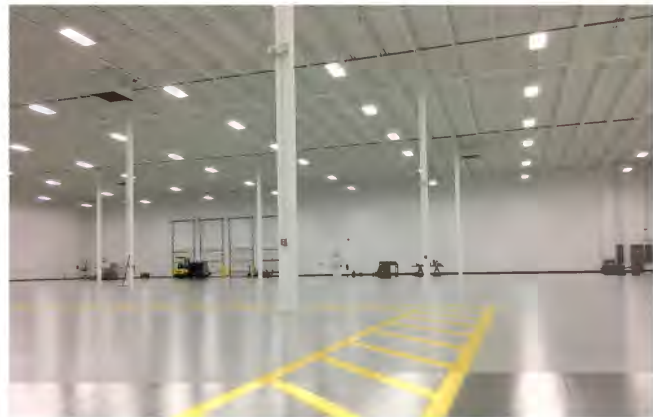
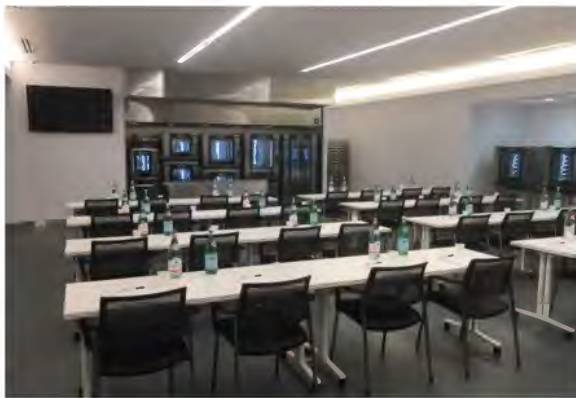
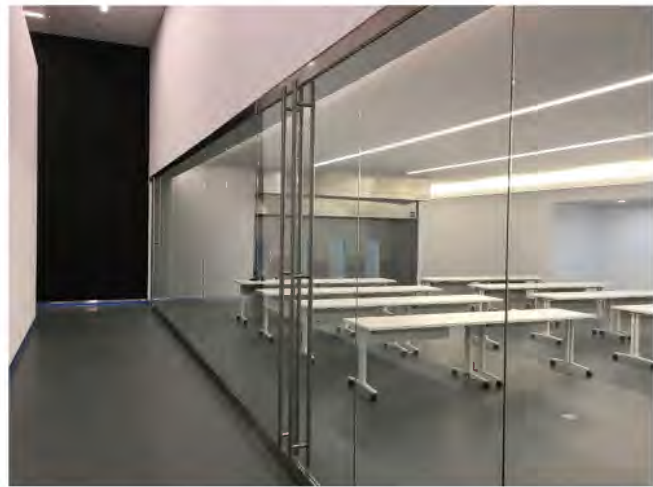
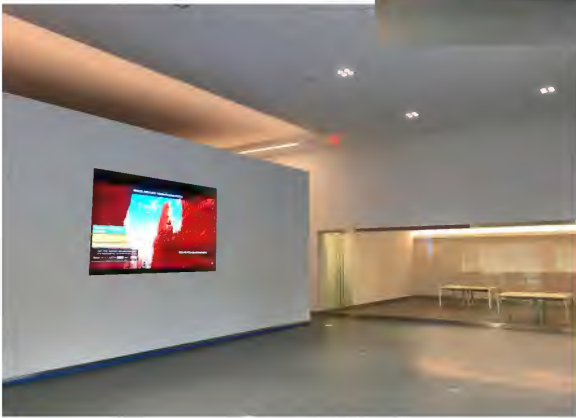
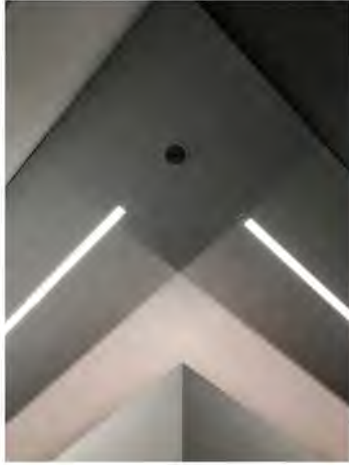
An Inside Out Perspective: By designing from the inside out, we truly create a solution that considers every aspect of how your business operates, flows, interacts with customers, and can be the most productive for your employees or those you serve. First we get inside your vision and then we get inside how your business works best to create a solution that helps achieve both.

Client Focused, First & Foremost: We simply would not exist without our clients, so earning your confidence and then reinforcing it by what we do is an everyday focus for us. It starts with listening and truly hearing what you envision from your perspective so we can effectively put this into a design the works for you. From the initial design to working with your contractor, we will always operate with your needs in mind.



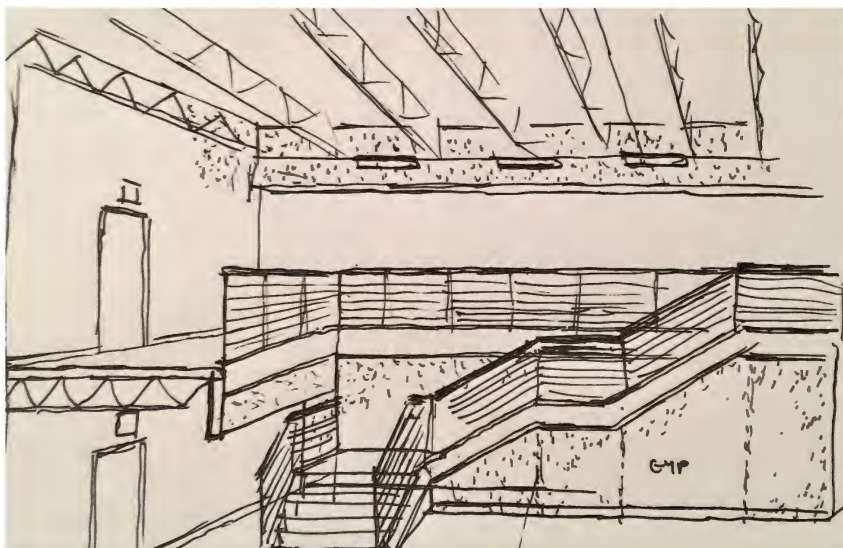
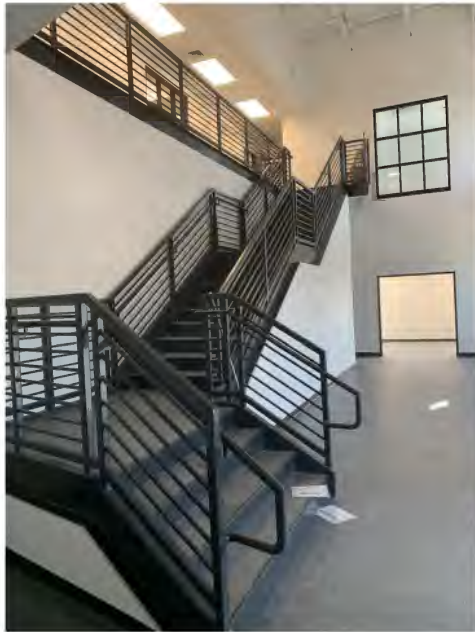
Industrial Design





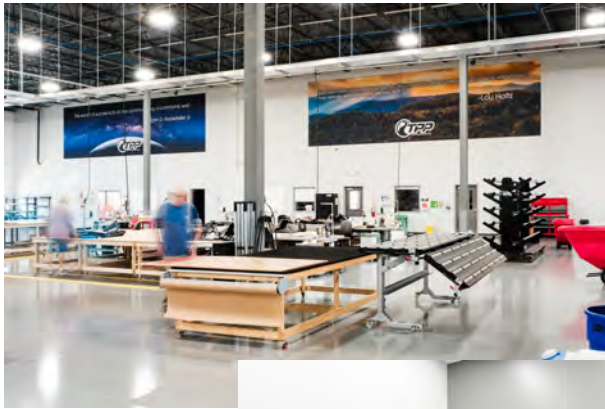
Unox
Denver, NC

Office and warehouse facility for Italian
high end oven manufacturer.



**Progressive Furniture
Claremont, NC**

60,000 square foot furniture
manufacturing space.



The Print Path Hickory, NC

50,000 square foot office and
factory for large scale graphic
printing in precast building.



**Cobia Boat– Marion,
NC**

100,000 square foot manufacturing
facility for a boat manufacturer with 4,250
square foot office and break room.



After



Before



**Servpro
Granite Falls, NC**

10,400 square foot adaptive
reuse of former factory to
office and warehouse space.



Von Drehle Corporation
Maiden, NC

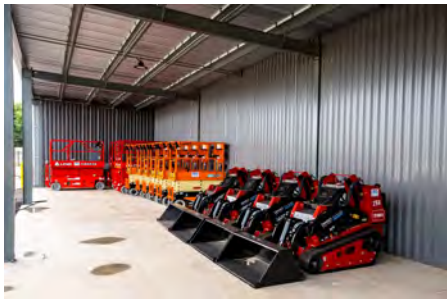
150,000 square foot paper
products facility with 3,000
square foot office space.

**Campbell
Design**
built ■ architecture



Retail





Cooke Rentals Maiden, NC

Award winning PEMB design
for expanding equipment rental
and storage business.

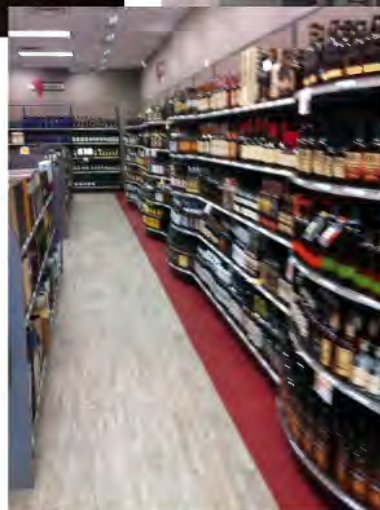
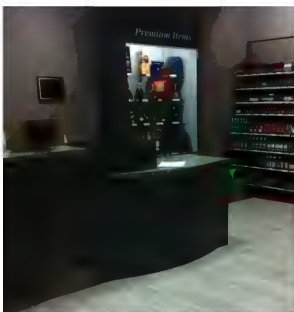
**Campbell
Design**
built  architecture



**Blood Sweat and Gears
Stanley, NC**

3,700 square foot
freestanding of bicycle shop
with additional tenant space.

**Campbell
Design**
built ■ architecture



ABC Store Gastonia, NC

5,000 square foot retail store
containing offices and
storage for local Alcoholic
Beverage Commission.



After



Before

**Pin Station
Newton, NC**

25, 000 square foot successful
addition to a family bowling and
entertainment complex.



HealthSmart Pharmacy Claremont , NC

3.400 square foot pharmacy with
boutique atmosphere in retail
area. Prototype for future
locations.



After



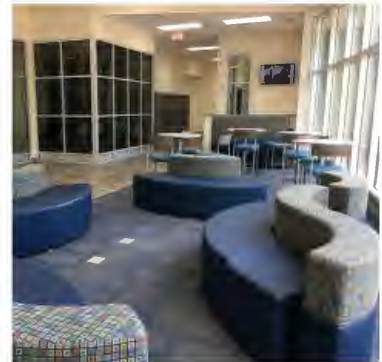
Before

**Retail Center
Gastonia, NC**

Renovation of former ABC
store to two tenant retail center
for Kay Jewelers and Mattress
Firm.



School and Office Design





**University Christian High School
Hickory, NC**

13,000 square foot high school on the Lenoir-Rhyne University campus. An emphasis on laboratory rooms and communal break out spaces were incorporated in the design.



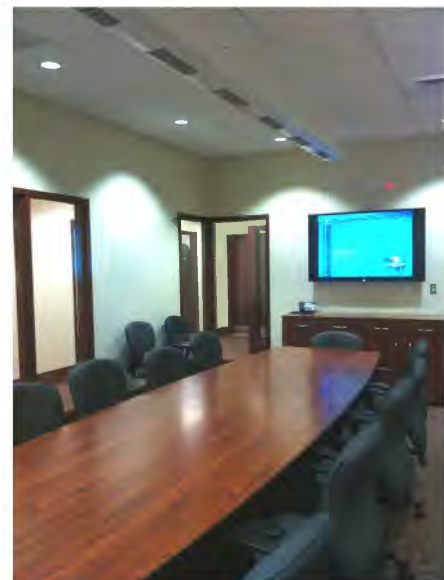
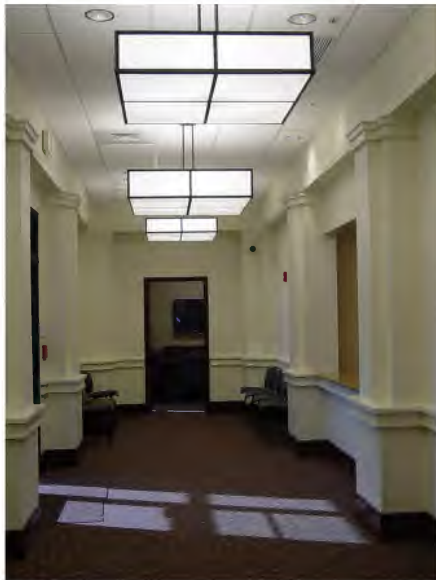
Manufacturing Solutions Center Conover, NC

30,000 square foot lab and
office space for the development
of new manufactured products
on a redeveloped industrial site.



**Manufacturing Solutions Center
Phase 2
Conover, NC**

75,000 square foot training, office and business incubator space for new manufactured products on a redeveloped industrial site.



**Western Piedmont Council of Governments
Hickory, NC**

18,000 square foot office space for non-profit group that provides long range planning and technical assistance to local municipalities.

**Campbell
Design**
built ■ architecture



**CVCC Cosmetology School
Hickory, NC**

10,000 square foot cosmetology school with spaces for cosmetology, esthetics, manicure, classrooms and staff offices.



US Government Facility North Carolina

54,000 square foot space plan for
reuse of former industrial plant to
office space for large government
organization with staff of over 375.

**Campbell
Design**
built ■ architecture



Medical Design





Mulberry Pediatrics
A Division of Caldwell UNC Healthcare
Lenoir, NC

6,700 square foot new pediatric medical office. Scope of work included planning, finishes and furnishings.

Campbell
Design
 built ■ architecture



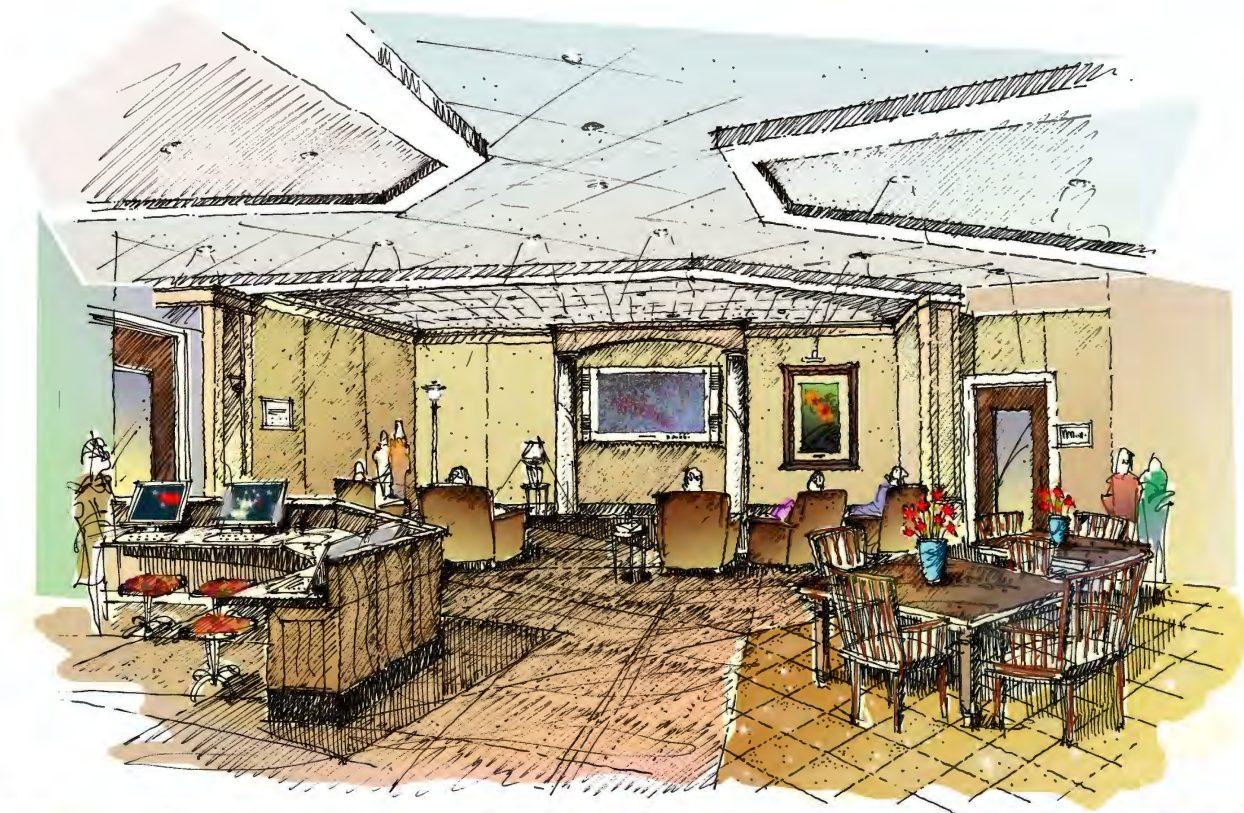
**Family Birth Place
Caldwell UNC Healthcare
Lenoir, NC**

Replacement of finishes and furnishings for Family Birth Place. Scope of work includes planning, finishes and furnishings.



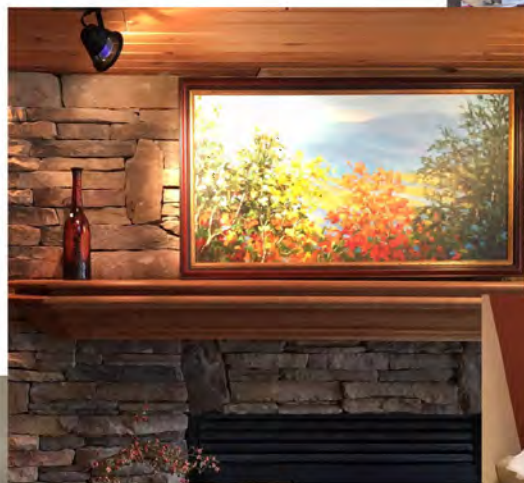
Colony at Brookdale First Floor
Statesville, NC
Architecture by HSMM

Complete finish selections, millwork design, and special lobby lighting for medical office.



**Frye Regional Medical Center
Physician's Lounge
Hickory, NC**
Architecture by Abee Architect, PA

2,100 square foot private
physician's lounge and dining area.



**Blowing Rock Medical Park
Caldwell UNC Healthcare
Blowing Rock, NC**

Renovation of former cabinet showroom to busy medical practice and Urgent Medical Care. Scope of work includes finishes, furnishings and art

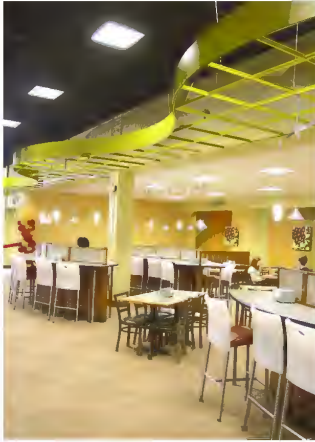


**Anderson Medical Park
A Division of Caldwell UNC Healthcare
Hudson NC**

13,500 square foot renovation of exam rooms, offices, and break room. Scope of work included finishes and furnishings.



Restaurant Design

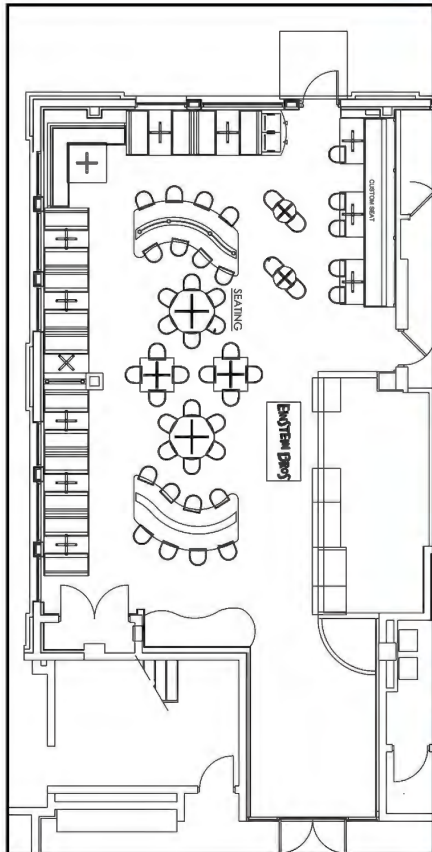




Fresh Chef
Conover, NC

**Campbell
Design**
built ■ architecture

3,700 square foot restaurant
and bar with outdoor seating.



**Einstein Bros. Bagels at WCU
Cullowee, NC**

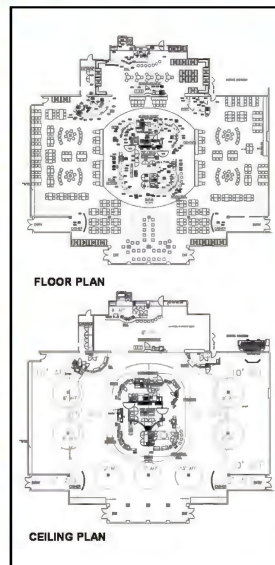
2,700 square foot bagel restaurant in Hines Student
Center at Western Carolina University



**Pellegrino's Trattoria
Troutman, NC**

3,500 square foot Italian restaurant
with pizza oven as focal point.

**Campbell
Design**
built ■ architecture



Conceptual Plans



**Thomson Hall at Winthrop
University
Rock Hill , SC
Designed in association with
Food Service Renovations**

14,400 square foot dining hall with
concept of an updated
nineteen sixties interior.

**Campbell
Design**
built ■ architecture